

Categoria 10 VV **Altre Valvole**
VVGV Valvole a Sfera

Various Valves
 Generic Ball Valves

Valvole a sfera **serie VVGV**, versione **microfusa AISI316**.

Valvola sfera manuale **2P (2 pezzi)** passaggio totale AISI316/1.4401

- attacchi filettati F/F **femmina GAS** UNI EN 10226-1

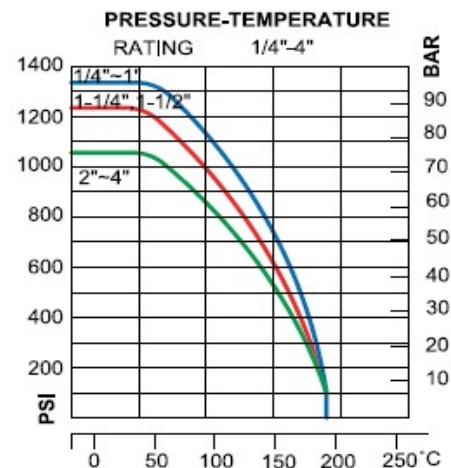
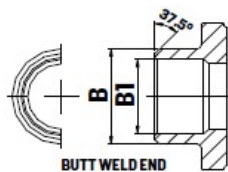
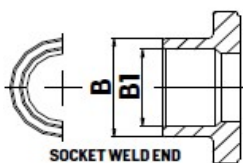
Valvola sfera manuale **3P (3 pezzi)** passaggio totale AISI316/1.4401

- attacchi filettati F/F **femmina GAS** UNI EN 10226-1
- attacchi a saldare **di tasca SW** (SOCKET WELD)
- attacchi a saldare **di testa BW** (BUTT-WELD) a richiesta

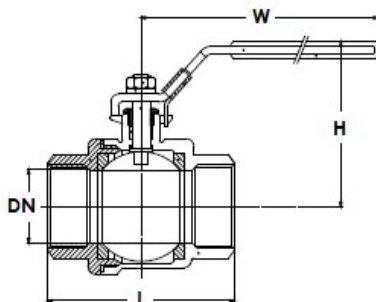


Campi d'impiego e caratteristiche generali:

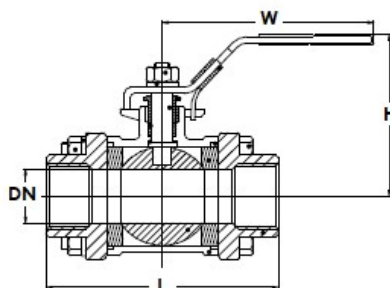
- Corpo valvola e sfera AISI 316 W 1.4401
- Altri componenti AISI 304 W 1.4301
- Anello di tenuta sede PTFE
- Guarnizioni e tenuta stelo PTFE
- Pressione e temperatura di esercizio **VEDI TABELLA RATING**
- attacchi a saldare **di tasca SW** (SOCKET WELD)
- attacchi a saldare **di testa BW** (BUTT-WELD) a richiesta



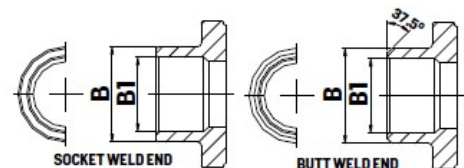
Valvola tipo 2P



Valvola tipo 3P



Attacchi a saldare SW e BW



DN	L		H		W	B		B1		Peso gr.	
	2P	3P	2P	3P		SW	BW	SW	BW	2P	3P
Ø1/4"	50	58	48	56	98	19	17.6	14.1	12	200	430
Ø3/8"	50	58	48	56	98	22.5	17.6	17.6	14	210	410
Ø1/2"	60	62	52	56	98	27	21.5	21.7	17.1	290	540
Ø3/4"	65	76	61	70	120	33	27.1	27.1	22.5	440	730
Ø1"	80	85	65	76	154	40	34	33.8	28	620	1130
Ø1 1/4"	92	100	79	81	154	48.8	42.5	42.6	35.5	1080	1670
Ø1 1/2"	105	115	83	92	184	55	49	48.7	43	1490	2430
Ø2"	125	132	97	103	184	67.2	60.8	61.1	53	2560	3500
Ø2 1/2"	156	165	129	130	245	86.4	76.2	76.9	65	5040	7400
Ø3"	183	183	138	141	245	103	92	89.5	80	8150	12400
Ø4"	/	232	/	170	308	130	116	115.5	100	/	22000